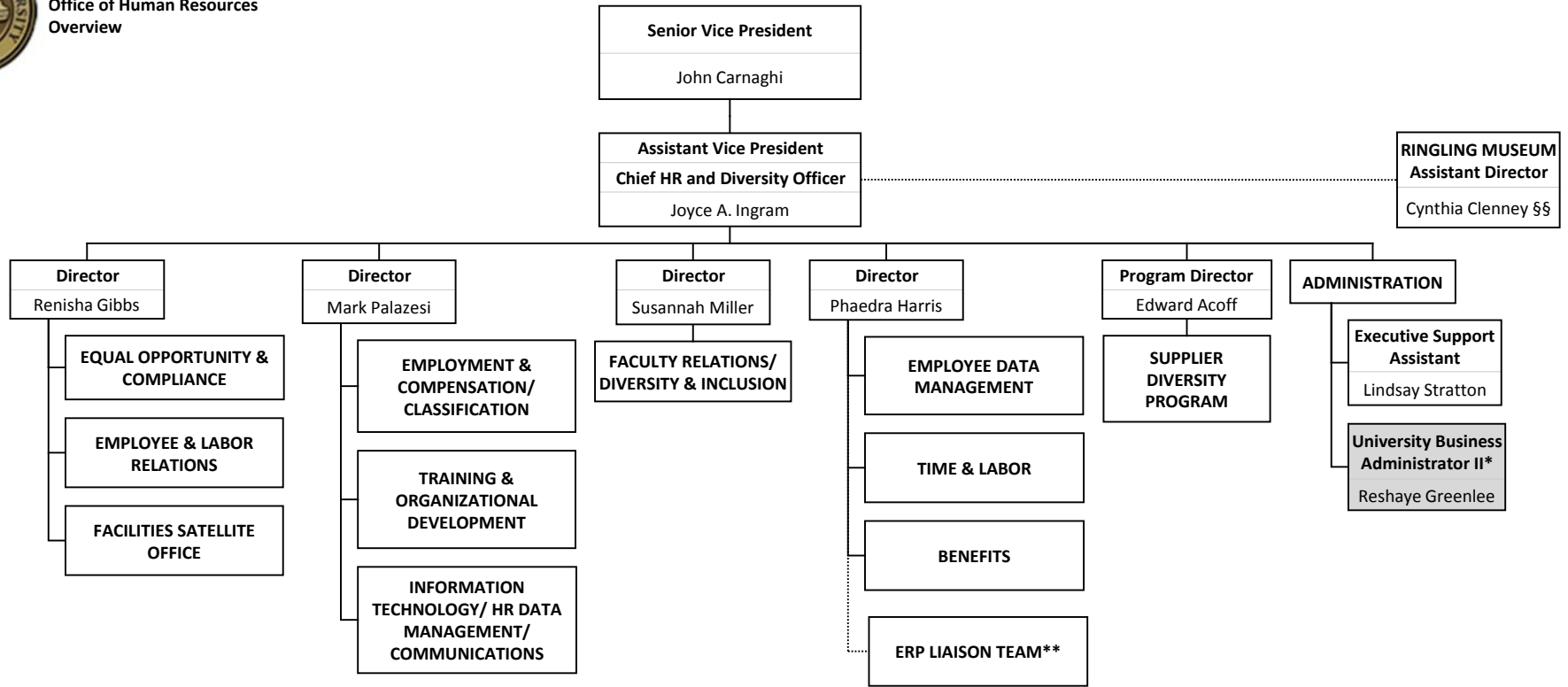




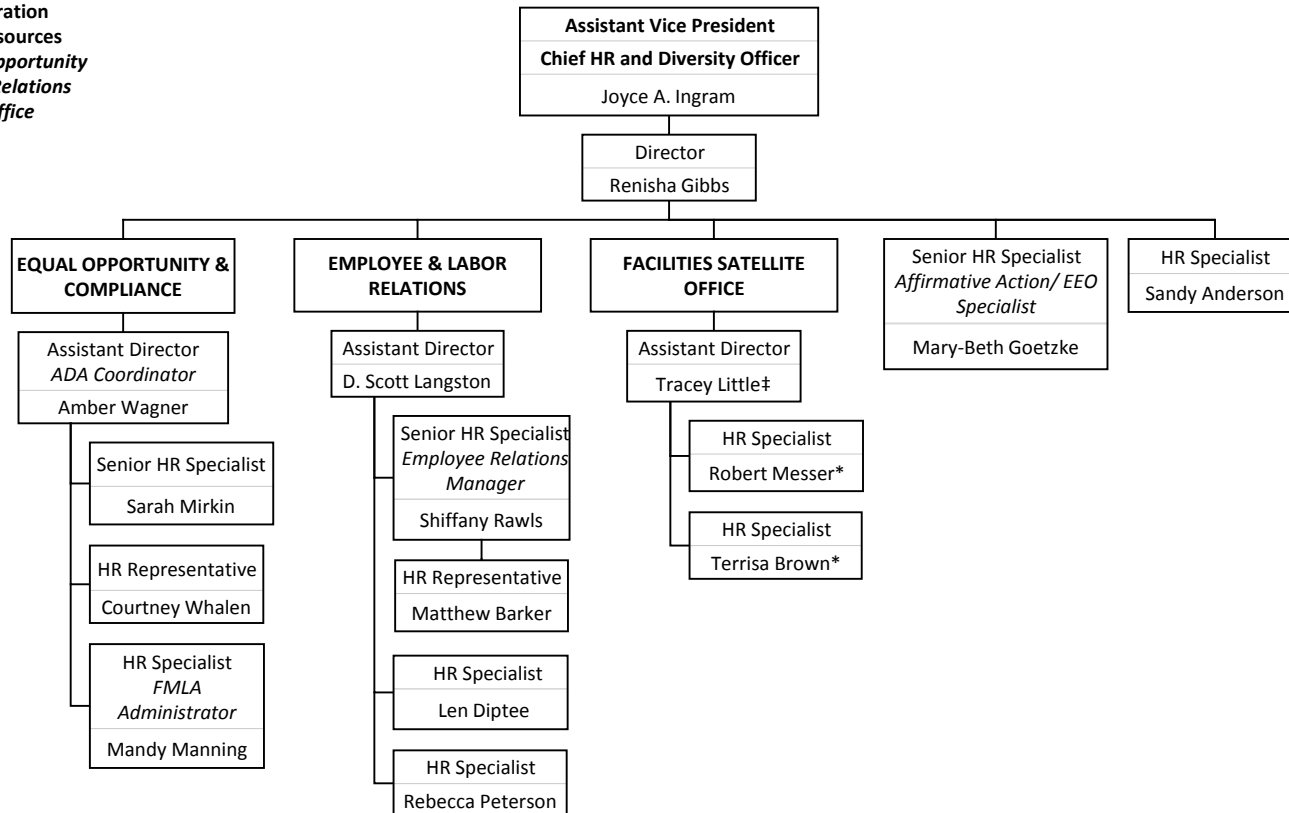
THE FLORIDA STATE UNIVERSITY
Finance & Administration
Office of Human Resources
Overview



* Reports directly to #56494, see University Business Administrators

** Reports directly to #57876, see ERP

§§ Reports directly to #56508, see Ringling Museum Overview

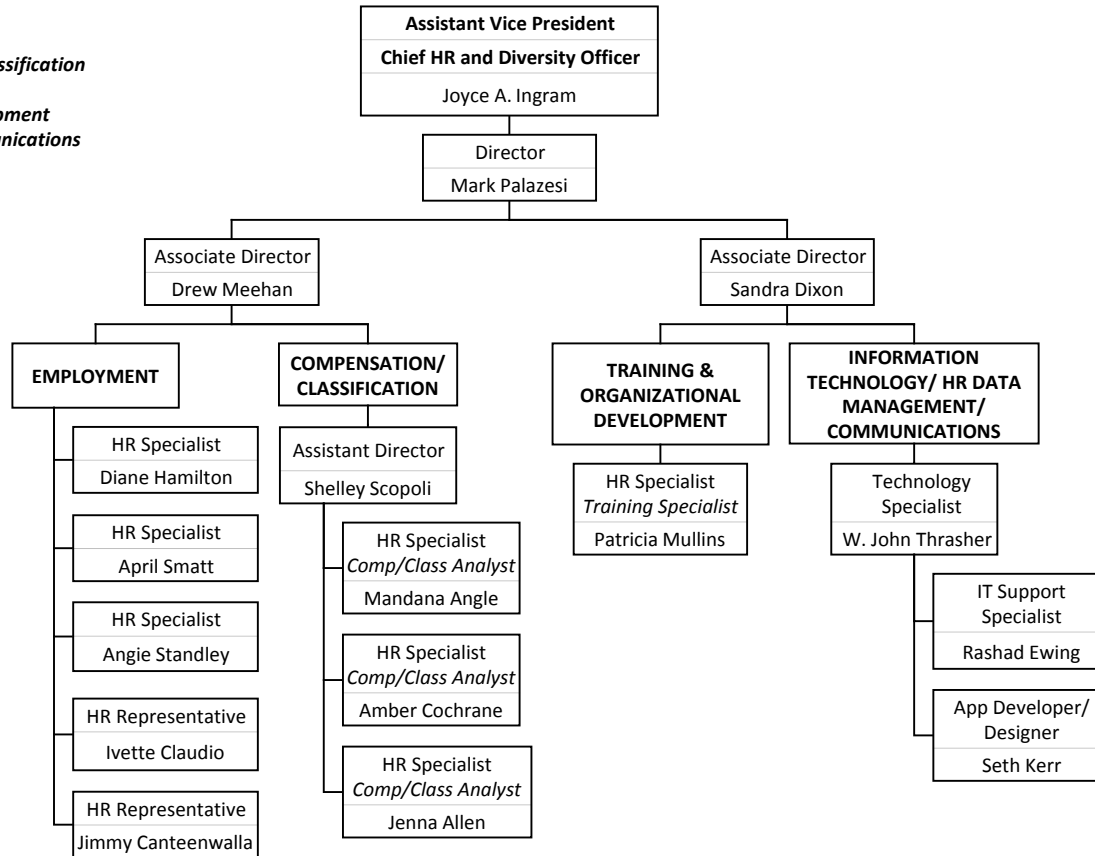


* Position funded by Facilities

‡ Reports indirectly to #57206, see Facilities Overview

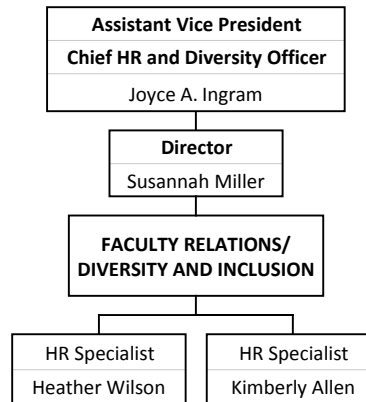


THE FLORIDA STATE UNIVERSITY
Finance & Administration
Office of Human Resources
Employment & Compensation/Classification
HR Data Management
Training & Organizational Development
Information Technology & Communications



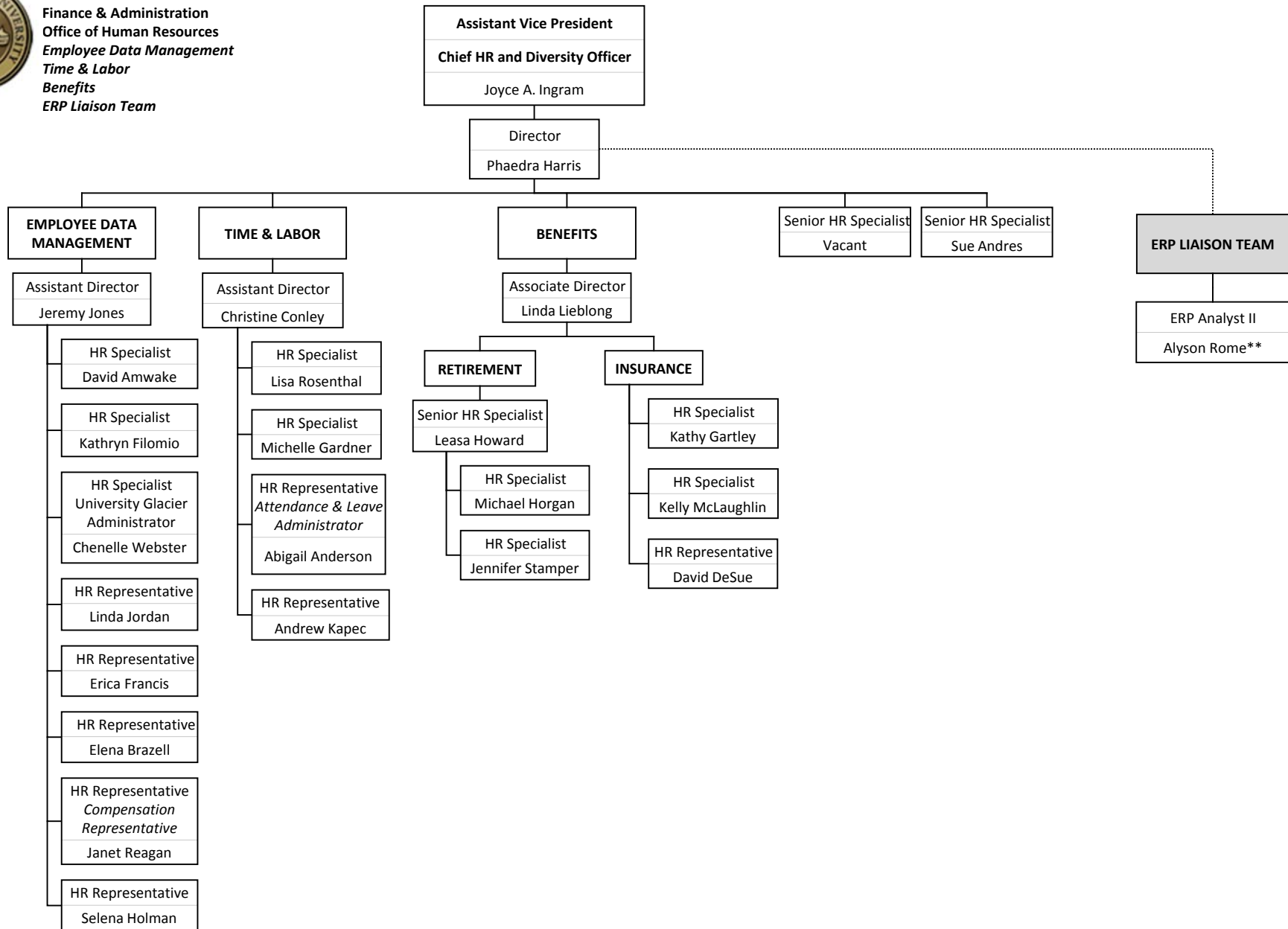


THE FLORIDA STATE UNIVERSITY
Finance & Administration
Office of Human Resources
Faculty Relations
Diversity & Inclusion





THE FLORIDA STATE UNIVERSITY
Finance & Administration
Office of Human Resources
Employee Data Management
Time & Labor
Benefits
ERP Liaison Team



** Reports directly to #57876, see ERP