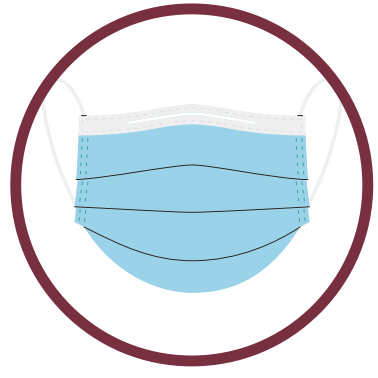


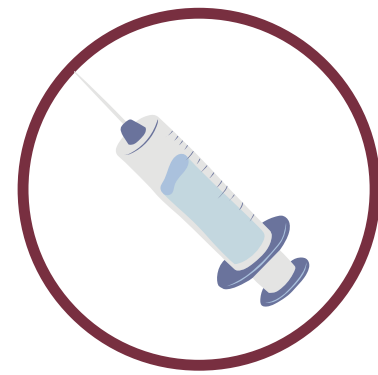
COVID-19 Guidelines for Faculty & Staff

January 7, 2022



MASK/FACE COVERING

Medical grade masks such as surgical masks, KN95's, etc., are expected. Wear your mask when you are indoors and around others. Masks should be worn properly at all times. Do not pull the mask low on your nose, below your nose, or below your mouth or chin.



VACCINATIONS

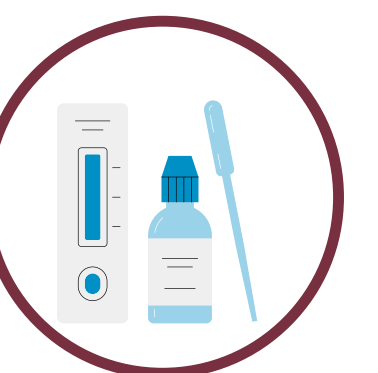
We encourage everyone to obtain the COVID-19 vaccine/booster to help mitigate the spread of the virus. **Book at vaccine.fsu.edu.**



EXPERIENCING SYMPTOMS

Get tested immediately.

Isolate at home until your test results are back. If positive, follow the guidance for testing positive.



QUARANTINE

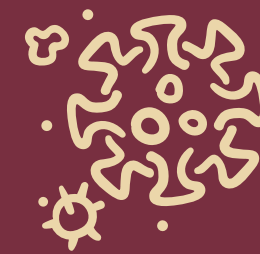
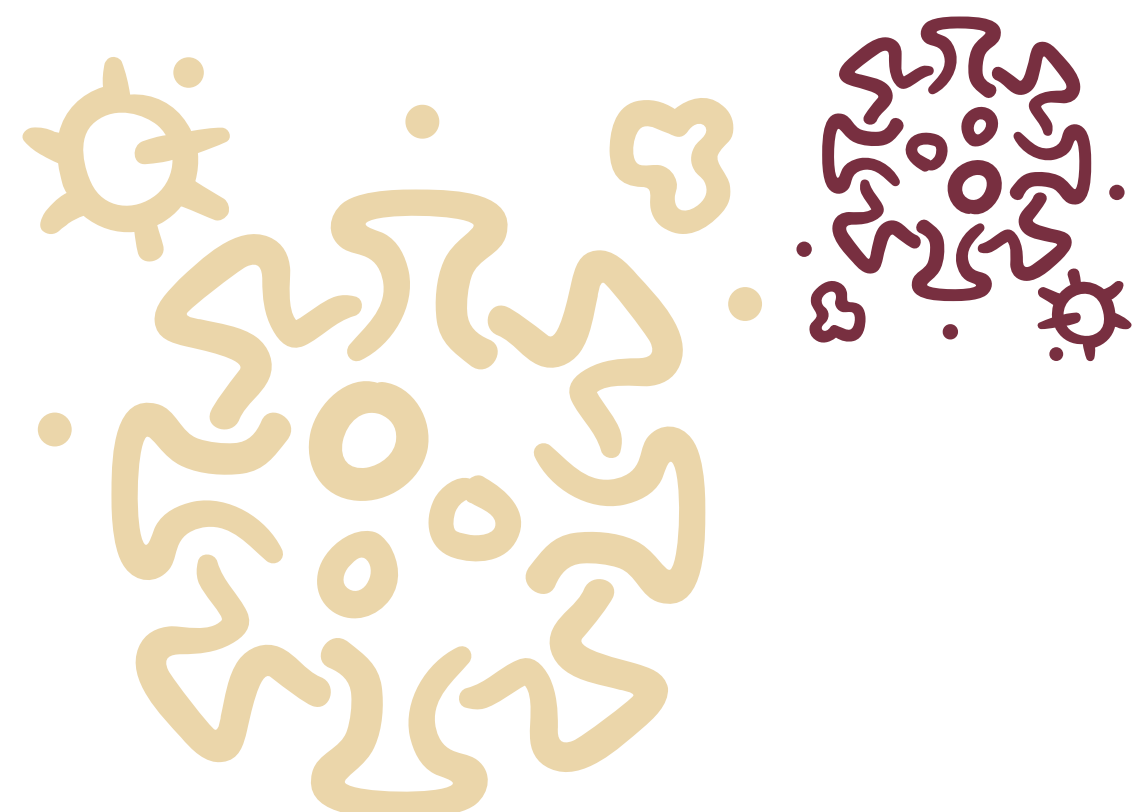
If you've had close contact, as defined by the CDC, with a positive individual, follow the guidance below:

Vaccinated with both doses of the Moderna or Pfizer 5+ months ago, or J&J 2+ months ago and NO booster or unvaccinated:

Isolate for 5 days from exposure. Wear a mask for an additional 5 days. It is recommended to test on day 5.

Vaccinated with both doses of the Moderna or Pfizer 5+ months ago, or J&J 2+ months ago AND received a booster:

Not required to quarantine unless symptomatic. Wear a mask for 10 days. Recommended to test on day 5.



TESTING POSITIVE

no symptoms

Isolate for 5 days.

You may return to work on day 6.

Wearing a mask is mandatory for 5 additional days on campus.

symptoms

Isolate until resolution of symptoms.

Including 24-hours fever-free, up 10 days. Wearing a mask is mandatory if returning before day 10.

RETURNING TO CAMPUS

Employees who do not want to wear a mask in the workplace must isolate themselves at home and may return on day 11.

If symptoms are not improving by day 10, email HR at HR-COVID19@fsu.edu and SAFER at COVID19@fsu.edu for additional guidance.

SAFER will evaluate the details of your case and provide a return to work date. **No negative tests are required unless specifically requested by SAFER/DOH.**



Questions? HR-COVID19@fsu.edu

#StayHealthyFSU

