

THE FLORIDA STATE UNIVERSITY
University Organizational Chart
Overview

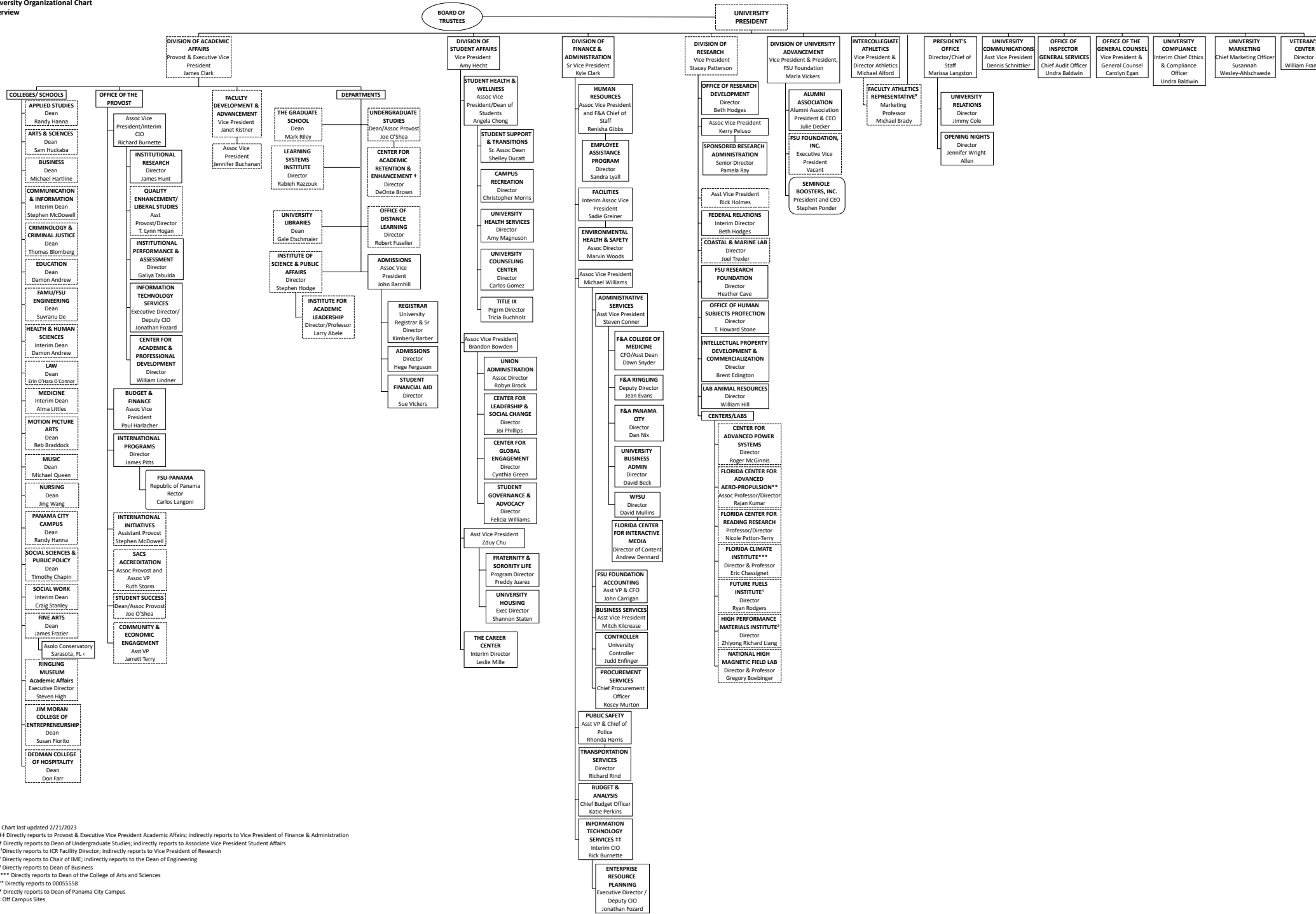


Chart last updated 2/21/2023
 ++ Directly reports to Provost & Executive Vice President Academic Affairs; indirectly reports to Vice President of Finance & Administration
 † Directly reports to Dean of Undergraduate Studies; indirectly reports to Associate Vice President Student Affairs
 † Directly reports to ICR Facility Director; indirectly reports to Vice President of Research
 † Directly reports to Chair of IMC; indirectly reports to the Dean of Engineering
 † Directly reports to Dean of Business
 ** Directly reports to Dean of the College of Arts and Sciences
 *** Directly reports to 0005558
 * Directly reports to Dean of Panama City Campus
 † Off Campus Sites