



Florida State University Police Department



New Employee Orientation



Welcome to Campus

David L. Perry
Assistant Vice President for Safety and Chief of Police
Major Jim Russell (Deputy Chief)
Captain Jason Trumbower (Operations)
Captain Terri Brown (Support Services)

Hello and welcome to New Employee Orientation. My name is David Perry. I'm the Assistant Vice President for Safety and Chief of Police.

I hope our presentation today will give you more information on how to stay safe and show you all the things we are doing every day to keep our campus as safe as possible.



FSUPD Mission Statement

“The Mission of the Florida State University Police Department is to support the mission of the Florida State University by promoting a safe and secure higher education environment while providing proactive police and customer-related services aimed at reducing crime.”



It is the mission of the Florida State University Police Department to support the overall mission of the University by providing proactive police services aimed at reducing crime.



Safety Matters at FSU

The Best Way to Stay Safe

Use Common Sense and Always Be Aware of Your Surroundings.



Take Advantage of the Security and Safety Resources Available at FSU.

The best ways to stay safe while on campus is: Number 1: Always use common sense and be aware of your surroundings. We're not saying you have to be fearful of what's going on campus but we do want you to pay attention to everything that's going on around you. And, Number 2, take advantage of the safety and security resources we have available for you.



FSUPD Facts

- Full Service, Accredited Law Enforcement Agency (Florida Commission on Accreditation)
- Police with powers of arrest, not Campus Security
- 24/7/365 campus response
- 67 sworn Police Officers, numerous civilian support staff
- Average Number of years of law enforcement experience: 12 years (We are here to help!)
- Follow compliance with Department of Education Crime Reporting Guidelines (Clery)



Some important **facts** about the Florida State University Police Department:

We are a full service, fully accredited law enforcement agency. That's a great thing. That means that everything, from fingerprinting to processing a crime scene, our agency is able to do it.

We operate 24 hours a day, 7 days a week / 365 days a year. So no, we never close. We are always open to assist you. Our officers have lots of skill and training. Some of our officers even have advanced degrees: From AA degrees all the way to Masters' degrees.

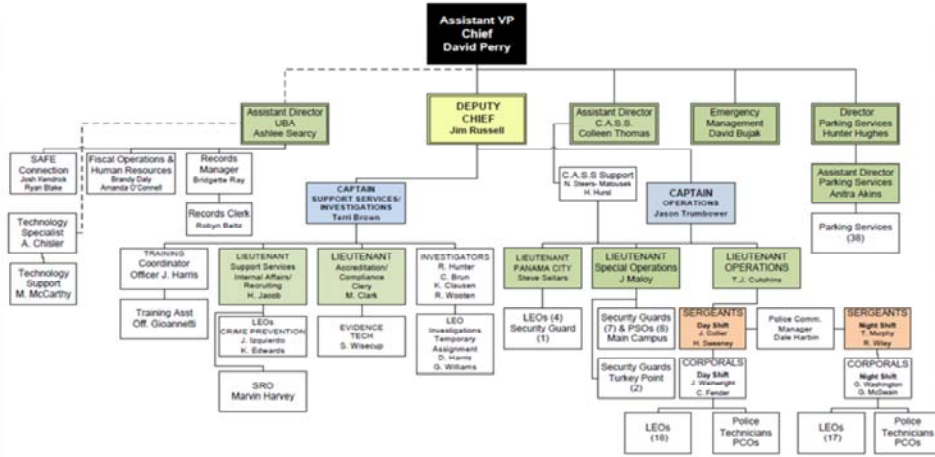
The FSUPD also follows Compliance with the Department of Education's crime reporting guidelines. This is known as Clery. Later on in the presentation, I will indicate where to get more information about our annual security report.



FSU Police Department

The Florida State University
Police Department

January 2014



FSUPD is a very large organization.

In addition to seeing patrol officers on bicycles or motorcycles and ATV's, you'll also see our officers walking patrols or beats. In addition to police services, we have responsibility for all card access and closed circuit televisions; emergency management or emergencies that occur on campus as well as Parking and Transportation Services. I know that's important to you.



Preparation Matters when Seconds Count

RUN HIDE FIGHT



RUN

- Have an escape route and plan in mind
- Leave your belongings behind
- Keep your hands visible

HIDE

- Hide in an area out of the shooter's view
- Block entry to your hiding place and lock the doors
- Silence your cell phone and/or pager

FIGHT

- As a last resort and only when your life is in imminent danger
- Attempt to incapacitate the shooter
- Act with physical aggression and throw items at the active shooter



Preparation for a critical incident is extremely important. That's why we talk to all our new students and employees about how to respond to an active shooter.

The response we want you to have is to **RUN, HIDE OR FIGHT**. There are several training sessions we provide throughout the year here but we want you to be reminded that, if you're in a dangerous situation, we want you to run and get away from that danger; hide/conceal yourselves and silence your cellphones; don't make any noise. As a last resort, we want you to fight. We want you to defend yourself and not let that person hurt you.



Preparation for Critical Incidents



- Conduct Yearly "Realistic" Training
- Have **6 Instructors** on staff
- Yearly Weapons Qualification
- Accredited Agency with approved Policy and Procedures
- Employees receive an average of **306 hours** every 4 years (**56** required by the state)
- Education Levels: **3 Masters / 21 BA-BS / 18 AA**

The FSU Police Department conducts yearly realistic training but we conduct that training **offsite**. We will never conduct training on campus or interfere with a class or any ongoing programs. Our officers are highly trained and we have skilled instructors on staff. Our employees receive 306 hours of training every 4 years whereas the State requirement is only 56 hours. We take training very seriously but we will never jeopardize your safety or interfere with your work.



Prevention and Identification


- **Student Situations Resolution Team – Students** ←
- **CMU (Crisis Management Unit) – students and Employees** ←
- **Threat Assessment Team (TAT) – Employees**
- Public Safety Meetings – Current Safety Topics
- Continuous communication with the Dean of Students Office
- Dean / FSUPD Meetings
- Adopt a COPP Program
- **Daily Report Sharing Process with FSU Departments**
- Greek COPP Initiative
- **Data Sharing Project with the County Jail System** ←
- **Welfare Checks on Students** ←
- Training and Best Practices
- Partnerships with Students Regarding Safety (SGA)
- Mutual Aid with the City and County
 - (in addition to training conducted)
- **FSU Alerts – Emergency Notifications**

Prevention and identification are very important. We want to try to prevent a situation from happening versus responding to a critical incident and this is where we need your help.

On our campus, we have several partnerships in place to detect and assist students in crisis. I'm just going to mention a few so you can understand how important these are.

Our Student Situations Resolution Team is made up of many members around campus to detect and assist students in crisis. We have a Crisis Management Unit that will respond anywhere on or off campus to help students or employees and we have a Threat Assessment Team that only deals with employee conduct and behavior. We have a very strong relationship with the Leon County Sheriff's Office. We have a daily report match process that provides information to FSUPD on any person that has been arrested within Leon County. We use that data to compare it with our student and employee data and we are concerned with matches for violent crimes and offenses that could jeopardize the safety of our campus.

We also conduct hundreds of Welfare Checks each year. A Welfare Check consists of an employee or faculty member having concern for a student or someone else within our community. We will send an officer to the location where that student or employee resides to make sure they are OK.



The logo features the Florida State University seal on the left, followed by the text "Emergency" in a small font, "ALERT" in large, bold, red letters with a yellow outline, and "System" in a smaller font below it. The background of the logo is white with a yellow and red gradient.

Primary Notification Methods

- www.fsu.edu Home Page
- Outdoor Sirens
- NOAA Weather Radios
- Text Messages
- E-mail
- Blue-Light Safety Telephones
- (850) 644-INFO Hotline
- 530AM Visitor Information Radio
- Voice-mail Message
- Academic Computing Pop Up Windows
- Reverse-Dialing (ADA)
- MySpace
- Facebook
- Twitter

Secondary Notification Methods

- 2-Way Radios
- Electronic Message Boards
- Electronic Card Swipe
- Seminole Cablevision
- WFSU Television
- WFSU Radio
- Vehicle Public Address Speakers
- Network Login Pages
- Voice over Fire Alarm
- People Locator
- Family Connection E-mail Listserv

FSU Alert is an important component to the FSU community. We branded our Emergency Notification systems to be unique so that, in the event, of a crisis or critical situation, you know the FSU Alert will give you timely information.

FSU Police Department uses more than 39 notification methods at this time. Of course, you can expect to receive an email, text message, maybe hear our outdoor sirens or even see our blue lights flashing. All these notification methods are to let you know that there is a serious or dangerous situation ongoing.



Staying Connected with Blackboard MyFSU



Staying connected with the MyFSU Mobile App is very important. This is where you can download several apps that connect you to the University.

The image displays the 'Seminole Safe App' interface. At the top left is the Florida State University logo. The main title 'Seminole Safe App' is in large yellow text. Below it is a grid of 25 icons for various university services: Maps, Buses, Alerts, Seminole SAFE, Athletics, Visitors Center, Campus Life, Colleges, BBLearn, News, Parking, Emergency Contacts, Directory, Events, Bookstore, Library, Laundry, Admissions, Dining, and Feedback. A green arrow points to the 'Seminole SAFE' icon. To the right of the grid, text reads 'NOLE SAFE FSUPD – Available NOW'. On the far right is a 'FSU ALERT' notification box with the text: 'Current University Status' and 'Florida State University is fully operational at this time.'

The FSU Police Department has created a safety app called, "Seminole Safe".



Seminole Safe App

SeminoleSAFE Mobile App



Stay Aware, Safe and Secure with the *SeminoleSAFE* Mobile App

The *SeminoleSAFE* app is your official mobile safety tool from Florida State University. It is built from a collaboration of multiple campus entities including FSU Police, Emergency Management, Dean of Students, University Health Services, Student Counseling Center, Environmental Health & Safety, Housing, Athletics, Facilities and many more.

We hope that you will download it and use it for safety information and important tips.



Seminole Safe App



Information at your fingertips





Transportation and Parking Services also uses an app that can help you stay connected with up-to-date information about parking structure closures, special events **and** it can help you register your vehicle. Please take a look at the Noles In Motion App.



Florida State University Police Department also uses FSU Guardian. You can find this in your app store under “Guardian”. It serves two purposes: It really is a Blue Light in your pocket for emergencies but it also can serve as a virtual escort if you are walking across campus late or if you want to set-up friends or family members to know where you’re going to be on or off campus.

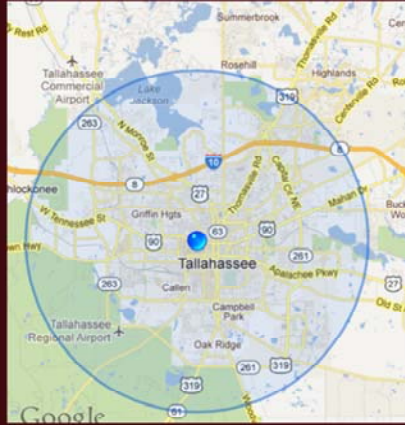
FSU Guardian is simple to set-up and, one of the beauties of the system is, if you ever dial 9-1-1-using your cellular telephone, the Consolidated Dispatch Center here in Leon County and the FSU Police Department will receive your personal profile you created once you registered in the system. This information is invaluable in the event of an emergency



FSU GUARDIAN

A Service of  THE FLORIDA STATE UNIVERSITY

**GPS
Location
Service
Provided**

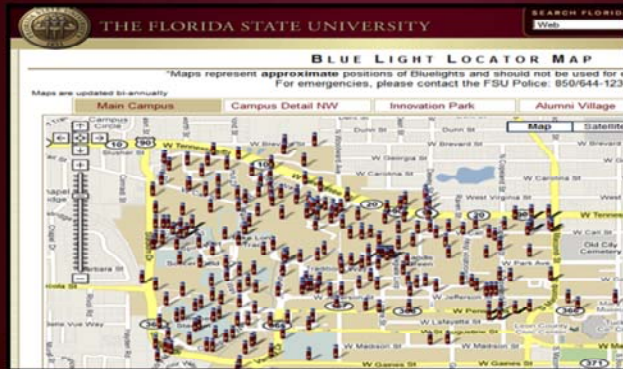


In addition to receiving your personal profile, the FSU Police Department and Consolidated Dispatch authorities will also know your GPS location



The Emergency Blue Light Trail

Florida State University controls more than 400 blue light phone kiosks, which, when activated, flash a blue light strobe and ring directly to the police department in case of emergency.



On the FSU campus, we have more than 400 Emergency Blue lights. The FSU Police Department understands the location of every Blue Light. So, if you ever have an emergency or need assistance, just press the button and one of our dispatchers will immediately come on the line and ask how they can assist you. In the event of an FSU Alert or emergency, we can make every Blue Light on campus flash at one time to create a visual signal for those who might be hearing impaired. So pay attention to them when you see them in operation.



Our Programs

Rape Aggression Defense (RAD)



The RAD program has been in place at FSUPD for several years, trained thousands of women and has proven to be a very popular program.



We are going to mention a few programs that the FSUPD provides at no charge. The first is our RAD Safety Training (Rape Aggression Defense). We train thousands of women how to defend themselves from would-be attackers **and** given them the empowerment to know they can get away from a dangerous situation. This class is free and offered multiple times throughout each semester. It's a great place to learn a self-defense skill that will stay with you for the rest of your life and it's a great place to meet a new friend or colleague and talk about safety.



Citizens Police Academy

The Florida State University Police Department saw a need to provide an "inside view" of law enforcement operations to our campus community. We developed a curriculum and invited campus members (Faculty, Staff and Students) to join us for the Citizen's Police Academy.



The Citizen Police Academy is another great program offered by the FSUPD. It's a free, 8-week training program where we invite employees and students to learn more about our agency. We will take you through a vehicle pursuit. We will take you to the range and let you shoot our rifles with lots of instructors standing around you.

We will even take you through an active shooter simulation to show you how officers respond to a critical incident. At the end of the training program you get a great certificate and that's something our employees and students have used for development and other job opportunities.



DUI Enforcement



DUI enforcement is very important to the FSUPD and our local law-enforcement partners. We take very seriously our safety on the streets, for our community members, our students and all those who travel within our boundaries. We partner with FAMU, the Florida Agricultural and Mechanical Police Department, with the Tallahassee Police Department and Leon County Sheriff's office to keep you safe.



This is why we do it.....



Matthew Beard (FSU Student)
Jan 20, 1985 - Dec 29, 2006



Alicia Gladden (FSU Student Athlete / Grad)
May 28, 1985 - April 19, 2013



Lt. Corey Dahlem (FSU Grad)
April 5, 1961 - April 4, 2007

This Is Why We Do It. We've been impacted. We've lost students; we've lost employees to senseless DUI crashes. That's why we need your help. The people you see on the screen before you were connected to our University and it's been devastating to lose them. We want your help to keep our streets safe.



Alcohol Weapons and Drugs on Campus are a very serious issue.

I want to go through some of the times you see on the screens so we can be on the same page. Guns and weapons are not allowed on campus. There is a State Statute that allows weapons to be concealed either in the trunk of a vehicle or securely in a glove box. But if that weapon is ever removed from the vehicle, anyone found in possession will be charged with a felony and will immediately be removed from the University. Alcohol is not allowed in possession of those under the age of 21. We take very seriously our proactive efforts to reduce alcohol-related issues around the University. Possession of any controlled substance is a violation of State law. Whether it is marijuana, cocaine or any controlled substance, if anyone is found in violation of these State laws, they will be held responsible. Prescriptions are legal as long as the prescription is for that person. Anyone giving, selling, trading or dispensing prescriptions without legal authority will be held responsible. Tasers and stun guns are not allowed on campus. Only sworn law enforcement officers are allowed to possess any weapon that produces an electrical charge. Pocket knives are completely legal as long as the blade is no longer than 3 and ½ inches and as long as that blade is used appropriately. Pepper spray is legal but it must be used defensively. A bad application of pepper spray is where Teresa sprays Sarah for taking her parking space in a garage. That is illegal and messy. Last, but not least, are fake IDs. I know this really won't apply to you as an employee, but maybe help us remind students that possession of a fake ID is a third degree felony and could have a negative outcome for them on our campus.

The FSUPD Website
www.police.fsu.edu

FLORIDA STATE UNIVERSITY PUBLIC SAFETY

FLORIDA STATE UNIVERSITY POLICE DEPARTMENT

HOME ORGANIZATION REPORT A CRIME CLERY ACT CONTACT US PAGES

Emergency Call 911
 FSUPD Non-Emergency (850) 644-1234
 University Status Hotline (850) 644-INFO (4636)

Tallahassee Unmuzzled Persons of the Year

FSUPD Headquarters, 830 West Jefferson St. PO Box 3064215, Tallahassee FL 32306 [Map Location](#)

QUICK LINKS

- ▶ FSU Alert
- ▶ Annual Security Report
- ▶ Lost and Found
- ▶ FSU Guardian

Important Information:

- ☐ **FSU Guardian**
- ☐ **Register Your Personal Property**
- ☐ **FSU Crime Mapping**
- ☐ **Crime Alerts**
- ☐ **Safety Guide**
- ☐ **Anonymous Crime Reporting**

The FSUPD web page has lots of important information that will help you stay safe and informed while on our campus. You can refer to our site to register personal property. You can look at our crime mapping to keep up with incidents that occur on and around our campus. And, most importantly, you can review our safety guide that will give you the annual security report for the institution. If you ever want to report a crime to us anonymously, simply go to our website and click on the link.



Safety Begins with YOU!



if you
SEE | **SAY**
something | something™



Your safety on campus starts with YOU! If you see something, say something. We need your help.



The Florida State University Police Department





QUESTIONS?



CONTACT:

Florida State University Police Department
830 West Jefferson St
Emergency on campus- 911
Non-emergency on campus-311
Or 850-644-1234

The FSUPD is located at 830 West Jefferson Street. Our building is open 24 hours a day, seven days a week. The emergency number is 911. For non-emergencies, the number is 850-644-1234. The FSUPD is here to keep you safe. We are here to help you.